

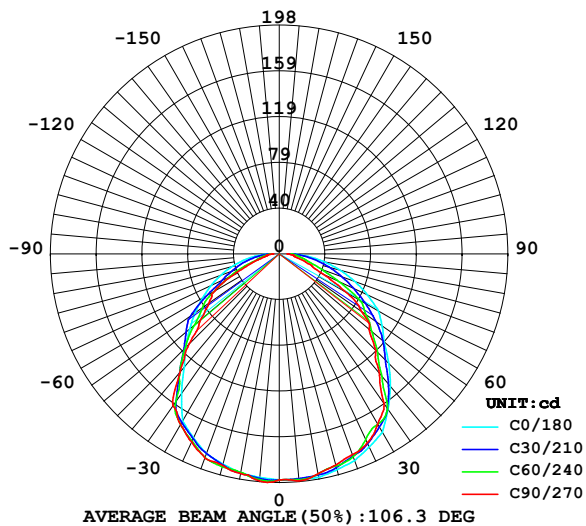
## LUMINAIRE PHOTOMETRIC TEST REPORT

Report number:

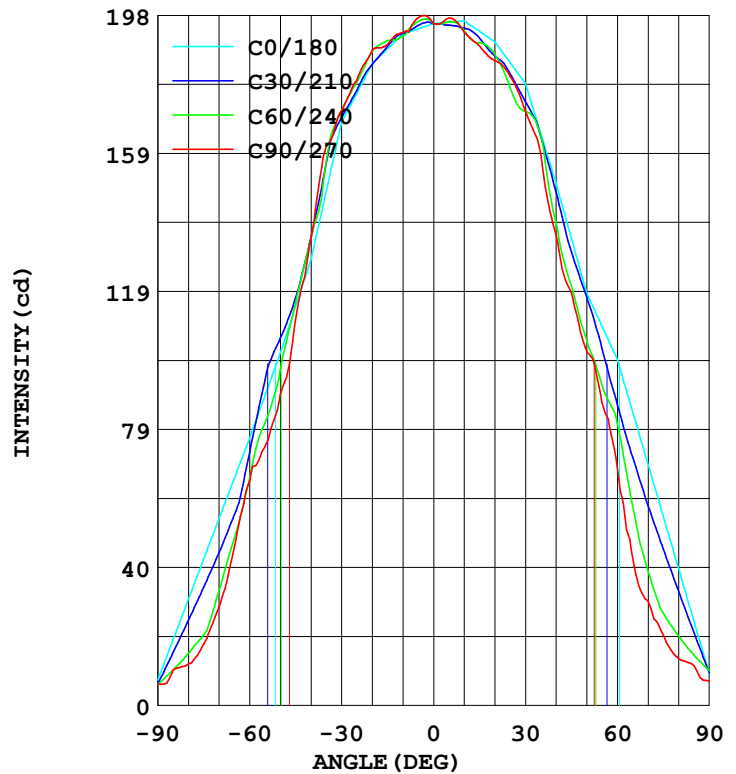
MANUFACTURER:	Address:	
NAME: 500410	TYPE:	WEIGHT:
SPECIFICATION:	DIMENSION:	SERIAL No.:

DATA OF LAMP		Imax(cd)	198.3	S/MH(C0/180)	1.24
MODEL		EFFICIENCY(%)	100.0	S/MH(C90/270)	1.28
NOMINAL POWER(W)	12	TOTAL FLUX(lm)	533.17	Voltage(V)	220.1
RATED VOLTAGE(V)	220	EFFICIENCY(lm/W)	43.0	Current(A)	0.104
NOMINAL FLUX(lm)	533.2	$\eta$ up(%)	0.0	Power(W)	12.40
LAMPS QUANTITY	1	$\eta$ down(%)	100.0	Power Factor(PF)	0.541
TEST VOLTAGE(V)	220.1	Effective Flux(lm)	519.5	EEI	0.272

LUMINOUS INTENSITY DISTRIBUTION



LUMINOUS INTENSITY DISTRIBUTION



Test System: HOPOO HPG1900  
Temperature: 25.3 DEG  
Operators:  
Test Date: 2022年05月27日

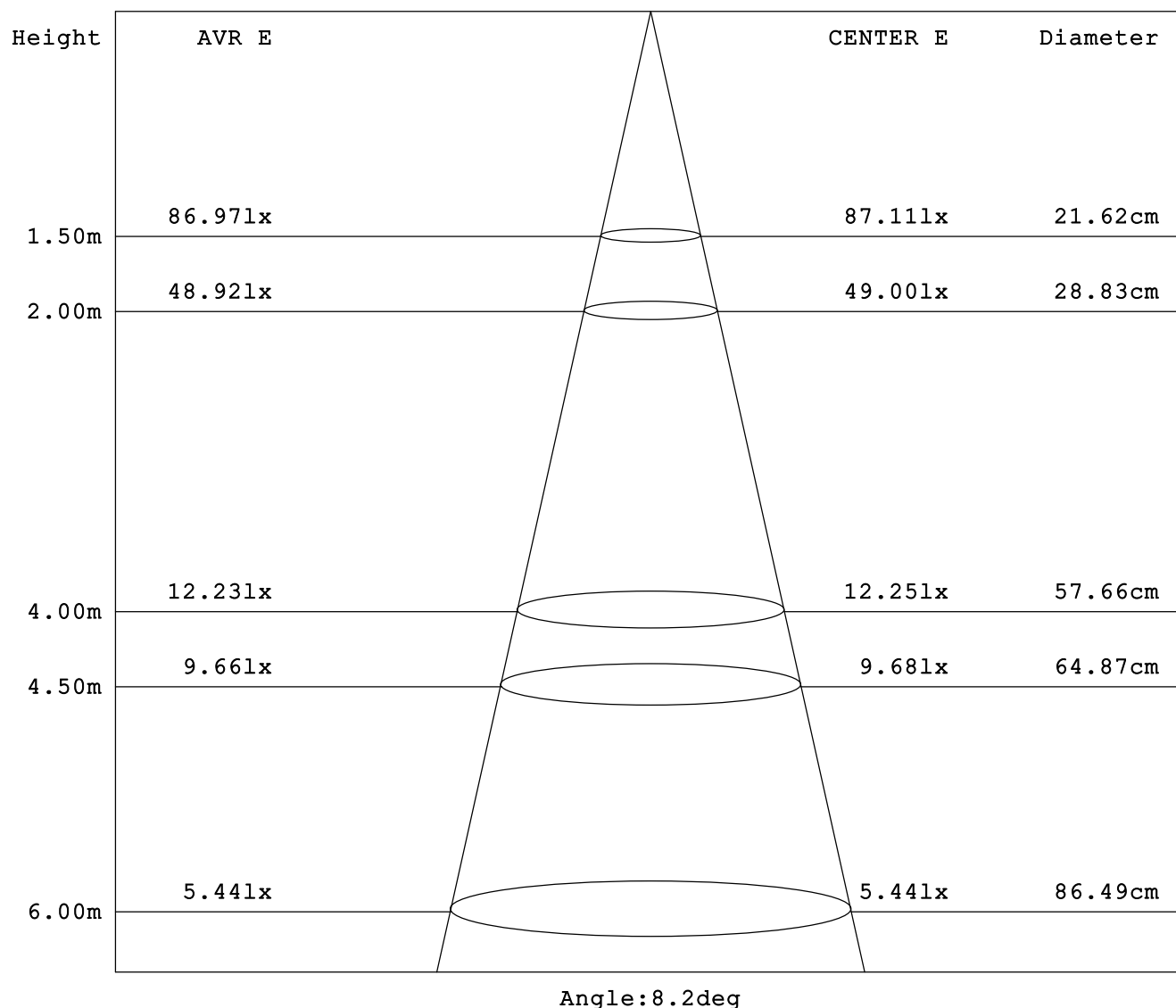
Test Set: HIGH A-Alpha (TYPE A)  
Humidity: 65.0%  
Test Distance: 10.000 m  
Remarks:

# HONGPU GONIOPHOTOMETERS SYSTEM TEST REPORT

## AVERAGE AND CENTER E Figure

Report number:

MANUFACTURER:	Address:	
NAME: 500410	TYPE:	WEIGHT:
SPECIFICATION:	DIMENSION:	SERIAL No.:



Test System: HOPOO HPG1900  
 Temperature: 25.3DEG  
 Operators:  
 Test Date: 2022年05月27日

Test Set: HIGH A-Alpha (TYPE A)  
 Humidity: 65.0%  
 Test Distance: 10.000 m  
 Remarks:

# HONGPU GONIOPHOTOMETERS SYSTEM TEST REPORT

## ZONAL FLUX DIAGRAM

Report number:

MANUFACTURER:	Address:	
NAME: 500410	TYPE:	WEIGHT:
SPECIFICATION:	DIMENSION:	SERIAL No.:

γ	C0	C45	C90	C135	C180	C225	C270	C315	γ	Φ zone	Φ total
5.0	194.5	196.0	197.6	197.2	196.3	195.9	197.5	195.3	0- 5	4.696	4.696
10.0	193.0	193.3	193.3	196.2	196.8	195.0	193.6	191.8	5- 10	13.95	18.65
15.0	188.7	189.5	190.0	195.3	193.8	190.1	189.6	189.3	10- 15	22.79	41.44
20.0	184.5	184.7	188.3	189.4	190.8	186.8	185.3	183.3	15- 20	31.01	72.46
25.0	176.0	176.9	179.9	184.1	184.8	183.0	180.8	176.8	20- 25	38.31	110.7
30.0	167.6	167.1	171.0	173.8	178.8	173.6	170.8	163.9	25- 30	44.36	155.1
35.0	147.8	152.3	160.8	164.5	164.4	157.4	158.6	145.8	30- 35	48.56	203.7
40.0	128.1	135.7	134.0	147.3	150.1	140.0	135.1	129.0	35- 40	49.09	252.8
45.0	114.7	119.3	110.8	124.1	134.3	125.0	118.5	113.8	40- 45	47.39	300.2
50.0	101.3	103.6	89.20	104.3	118.4	112.3	101.6	100.7	45- 50	45.04	345.2
55.0	89.10	88.36	74.50	90.28	109.0	98.86	87.09	88.93	50- 55	42.12	387.3
60.0	76.90	74.49	64.60	80.38	99.50	82.40	68.50	70.81	55- 60	38.48	425.8
65.0	65.30	50.72	45.59	60.25	84.44	63.06	42.50	46.70	60- 65	32.25	458.1
70.0	53.70	35.46	28.20	44.34	69.40	47.08	30.00	30.69	65- 70	25.16	483.2
75.0	42.10	26.76	17.60	33.88	54.34	36.17	20.20	23.96	70- 75	19.23	502.5
80.0	30.49	19.31	11.90	24.81	39.29	26.67	13.50	17.70	75- 80	14.33	516.8
85.0	18.90	12.64	10.10	16.47	24.25	17.83	11.50	11.58	80- 85	10.18	527.0
90.0	7.300	6.100	6.100	8.600	9.200	9.200	7.000	5.800	85- 90	6.144	533.1
95.0									90- 95		
100.0									95-100		
105.0									100-105		
110.0									105-110		
115.0									110-115		
120.0									115-120		
125.0									120-125		
130.0									125-130		
135.0									130-135		
140.0									135-140		
145.0									140-145		
150.0									145-150		
155.0									150-155		
160.0									155-160		
165.0									160-165		
170.0									165-170		
175.0									170-175		
180.0									175-180		
DEG	LUMINOUS INTENSITY:cd									UNIT:lm	

Test System:HOPOO HPG1900  
Temperature:25.3DEG  
Operators:  
Test Date:2022年05月27日

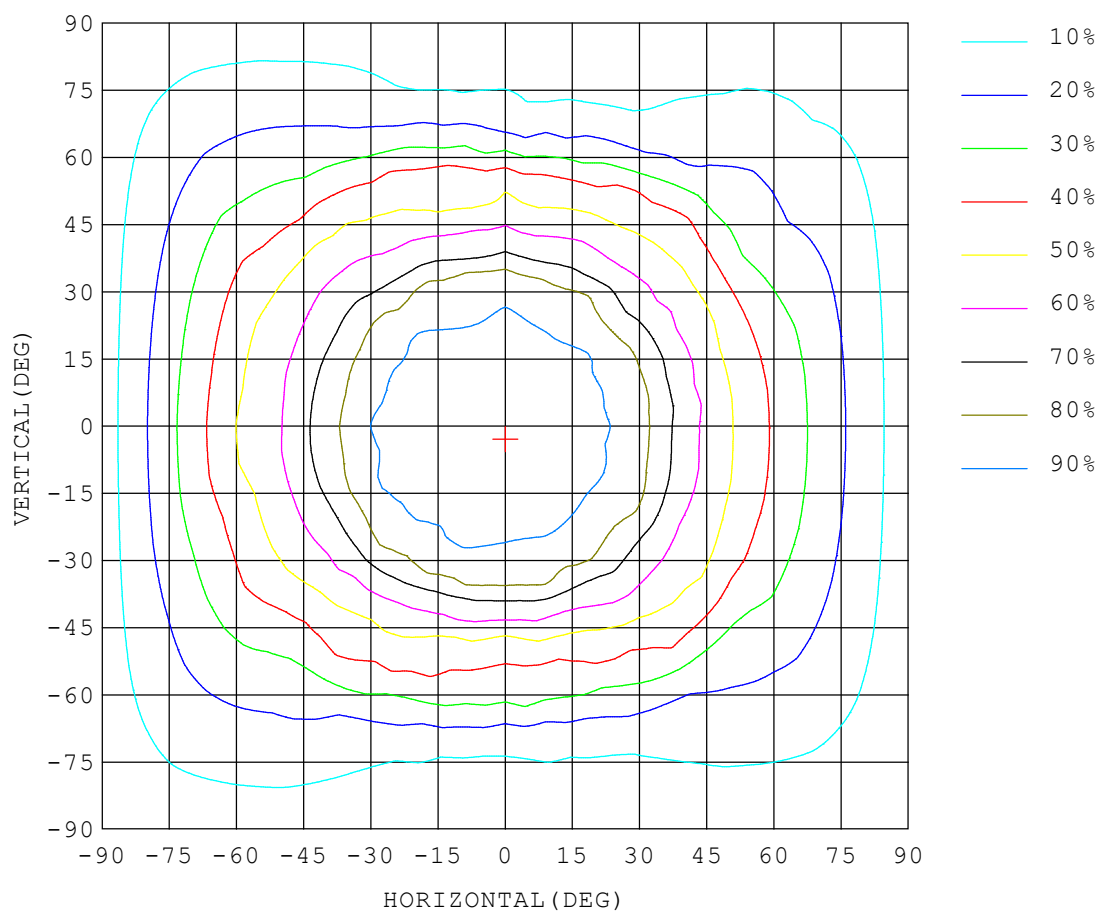
Test Set: HIGH A-Alpha (TYPE A)  
Humidity:65.0%  
Test Distance:10.000 m  
Remarks:

## ISOCANDELA DIAGRAM

Report number:

MANUFACTURER:	Address:	
NAME: 500410	TYPE:	WEIGHT:
SPECIFICATION:	DIMENSION:	SERIAL No.:

UNIT: cd



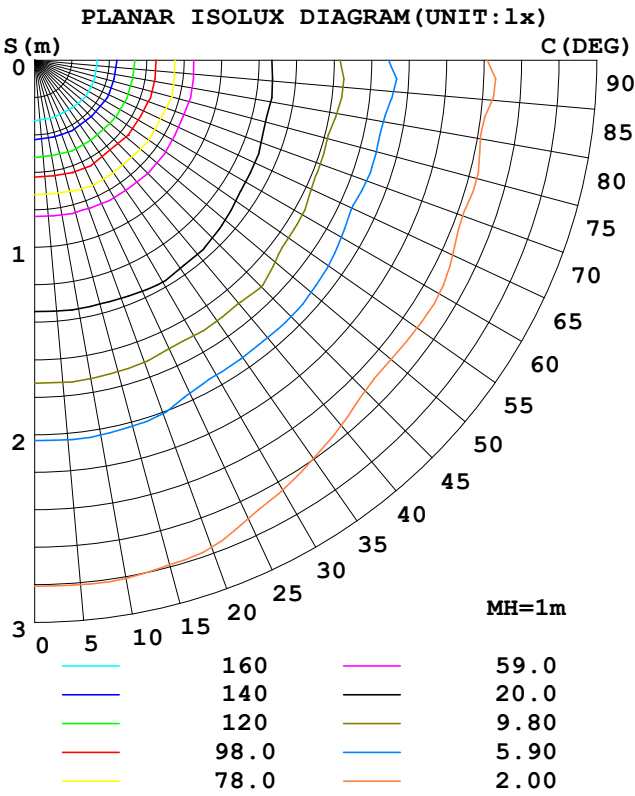
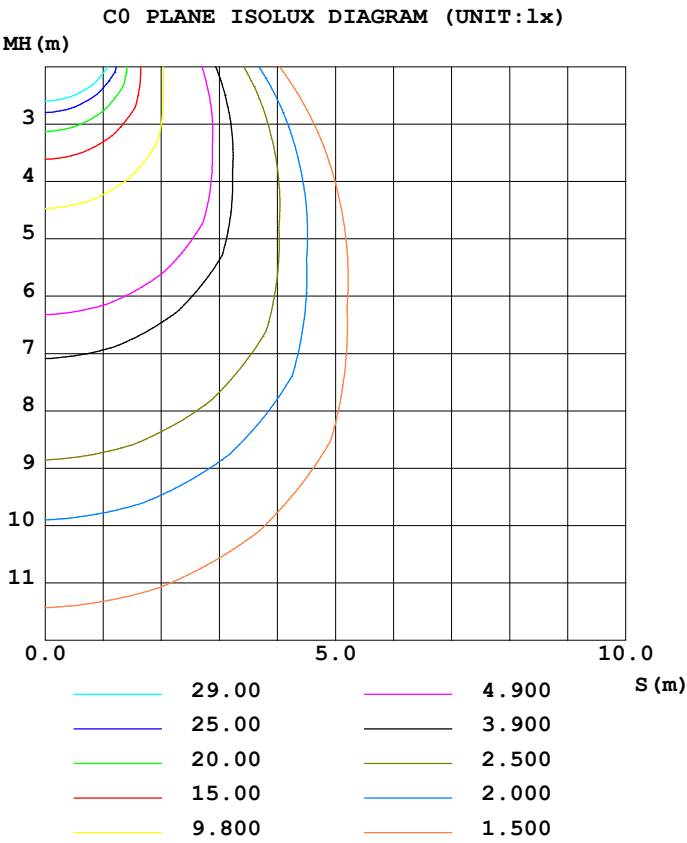
Test System:HOPOO HPG1900  
Temperature:25.3DEG  
Operators:  
Test Date:2022年05月27日

Test Set: HIGH A-Alpha (TYPE A)  
Humidity:65.0%  
Test Distance:10.000 m  
Remarks:

ISOLUX DIAGRAM

Report number:

MANUFACTURER:	Address:	
NAME: 500410	TYPE:	WEIGHT:
SPECIFICATION:	DIMENSION:	SERIAL No.:



Test System:HOPOO HPG1900  
Temperature:25.3DEG  
Operators:  
Test Date:2022年05月27日

Test Set: HIGH A-Alpha (TYPE A)  
Humidity:65.0%  
Test Distance:10.000 m  
Remarks:

# HONGPU GONIOPHOTOMETERS SYSTEM TEST REPORT

## LUMINOUS DISTRIBUTION INTENSITY DATA

Report number:

MANUFACTURER:	Address:	
NAME: 500410	TYPE:	WEIGHT:
SPECIFICATION:	DIMENSION:	SERIAL No.:

UNIT: cd

C (DEG) γ (DEG)	0	5	10	15	20	25	30	35	40	45	50	55	60	65	70
0.0	196	196	196	196	196	196	196	196	196	196	196	196	196	196	196
5.0	195	195	195	195	195	195	195	196	196	196	196	196	197	197	197
10.0	193	192	192	192	192	193	193	194	194	193	193	192	192	193	193
15.0	189	188	188	188	188	189	189	189	189	190	190	191	191	191	191
20.0	185	184	183	183	184	185	184	184	184	185	186	187	188	188	187
25.0	176	175	175	176	177	177	177	176	176	177	178	179	179	180	180
30.0	168	167	167	167	169	169	169	168	166	167	170	171	171	171	171
35.0	148	148	149	151	153	155	156	153	151	152	156	159	156	154	159
40.0	128	128	130	132	132	133	135	134	135	136	138	135	134	133	135
45.0	115	115	116	117	117	117	117	118	119	119	121	120	116	112	112
50.0	101	102	103	103	104	106	106	105	104	104	101	100	96.3	94.0	92.2
55.0	89.1	89.5	90.2	90.0	90.8	91.0	93.5	91.5	92.0	88.3	85.7	80.8	81.2	81.5	76.5
60.0	76.9	77.2	77.4	76.3	76.0	72.8	72.8	72.9	71.8	74.4	69.8	66.8	65.5	62.7	65.1
65.0	65.3	65.6	65.6	64.2	63.0	57.8	54.8	51.0	50.6	50.7	49.9	49.9	48.1	46.1	45.8
70.0	53.7	53.9	53.7	52.5	51.1	46.7	43.9	40.7	38.2	35.4	32.0	32.3	33.0	32.5	30.5
75.0	42.1	42.2	42.0	40.8	39.5	36.3	34.0	31.3	29.5	26.7	24.5	22.3	20.3	19.8	19.7
80.0	30.4	30.6	30.3	29.2	28.2	26.1	24.4	22.6	21.3	19.3	17.5	16.1	14.9	13.7	12.9
85.0	18.9	18.9	18.6	17.7	17.1	16.1	15.2	14.3	13.6	12.6	11.7	10.9	10.2	9.60	9.35
90.0	7.30	7.30	7.00	6.20	6.20	6.20	6.10	6.10	6.20	6.10	6.00	5.90	6.00	6.10	6.30

Test System:HOPOO HPG1900  
Temperature:25.3DEG  
Operators:  
Test Date:2022年05月27日

Test Set: HIGH A-Alpha (TYPE A)  
Humidity:65.0%  
Test Distance:10.000 m  
Remarks:

# HONGPU GONIOPHOTOMETERS SYSTEM TEST REPORT

## LUMINOUS DISTRIBUTION INTENSITY DATA

Report number:

MANUFACTURER:	Address:	
NAME: 500410	TYPE:	WEIGHT:
SPECIFICATION:	DIMENSION:	SERIAL No.:

UNIT: cd

C (DEG) γ (DEG)	75	80	85	90	95	100	105	110	115	120	125	130	135	140	145
0.0	196	196	196	196	196	196	196	196	196	196	196	196	196	196	196
5.0	197	197	197	198	198	198	197	197	197	197	197	197	197	197	197
10.0	193	193	193	193	194	194	194	195	195	195	195	196	196	196	196
15.0	190	190	190	190	190	190	191	191	192	193	194	195	195	195	194
20.0	187	187	188	188	188	187	187	187	187	188	189	189	189	190	189
25.0	180	180	180	180	181	182	183	184	183	181	182	183	184	184	185
30.0	172	172	171	171	172	173	175	175	174	173	174	172	174	176	176
35.0	165	163	161	161	161	162	163	161	162	164	163	160	165	165	167
40.0	136	136	134	134	135	137	136	137	137	140	143	144	147	149	146
45.0	113	114	112	111	112	115	115	115	116	119	119	122	124	124	127
50.0	92.7	93.1	90.8	89.2	91.4	93.4	92.2	93.6	99.0	104	104	102	104	107	110
55.0	74.4	76.0	76.3	74.5	77.8	79.3	79.9	83.7	86.2	85.3	88.4	90.6	90.2	93.1	92.5
60.0	64.3	65.2	67.9	64.6	68.7	68.7	70.2	72.7	70.6	73.8	74.0	77.6	80.3	76.5	76.7
65.0	47.2	44.8	48.5	45.5	48.8	50.4	51.7	51.9	51.7	53.4	57.5	59.4	60.2	60.1	61.2
70.0	29.8	28.8	30.4	28.2	30.9	30.2	32.3	33.1	36.3	36.7	37.7	39.5	44.3	47.7	49.3
75.0	19.1	20.4	18.7	17.6	17.3	18.2	18.8	22.4	22.6	23.7	26.8	30.2	33.8	36.8	38.4
80.0	13.0	13.0	13.4	11.9	12.7	12.2	12.3	12.8	15.1	17.1	19.4	22.0	24.8	27.2	28.6
85.0	9.43	10.2	10.3	10.1	10.6	9.69	9.33	9.73	10.8	12.0	13.3	14.8	16.4	18.0	18.9
90.0	6.50	6.80	6.30	6.10	6.40	6.90	7.20	7.40	7.50	7.60	7.90	8.29	8.60	9.00	9.20

Test System:HOPOO HPG1900  
 Temperature:25.3DEG  
 Operators:  
 Test Date:2022年05月27日

Test Set: HIGH A-Alpha (TYPE A)  
 Humidity:65.0%  
 Test Distance:10.000 m  
 Remarks:

## HONGPU GONIOPHOTOMETERS SYSTEM TEST REPORT

## LUMINOUS DISTRIBUTION INTENSITY DATA

Report number:

MANUFACTURER:	Address:		
NAME: 500410	TYPE:	WEIGHT:	
SPECIFICATION:	DIMENSION:	SERIAL No.:	

UNIT: cd

C (DEG) γ (DEG)	150	155	160	165	170	175	180	185	190	195	200	205	210	215	220
0.0	196	196	196	196	196	196	196	196	196	196	196	196	196	196	196
5.0	197	197	197	197	197	197	196	196	196	196	196	196	196	196	196
10.0	196	195	196	196	197	197	197	196	195	195	195	195	195	195	195
15.0	194	193	192	192	193	194	194	192	192	191	192	192	192	191	190
20.0	188	188	188	188	190	191	191	189	188	189	189	187	187	187	187
25.0	184	183	183	183	183	184	185	183	182	182	182	182	182	181	183
30.0	177	179	179	178	177	178	179	178	176	175	176	175	174	174	175
35.0	165	166	166	165	164	164	164	163	162	163	163	162	164	164	163
40.0	146	146	148	149	149	150	150	149	148	148	147	146	148	147	143
45.0	126	129	131	133	134	135	134	134	133	133	132	131	130	129	129
50.0	111	115	116	117	118	119	118	118	119	118	117	117	117	116	114
55.0	97.5	102	103	104	105	109	109	107	108	107	105	104	103	102	98.5
60.0	81.2	87.4	92.3	91.5	92.4	98.7	99.5	97.1	96.5	96.2	93.5	89.6	86.5	83.2	84.1
65.0	65.8	73.0	78.3	78.0	79.0	83.9	84.4	82.6	81.9	81.6	80.4	74.6	71.4	66.8	64.0
70.0	53.4	58.9	62.9	64.4	65.5	69.0	69.4	68.0	67.3	66.7	65.9	60.9	57.5	53.8	50.3
75.0	41.7	45.4	48.7	50.9	51.7	54.0	54.3	53.4	52.8	52.0	51.3	47.8	44.9	41.9	38.9
80.0	30.6	32.8	35.2	37.1	37.6	39.1	39.2	38.6	38.3	37.6	37.0	34.7	32.8	30.8	28.6
85.0	19.9	20.7	21.9	23.1	23.3	24.1	24.2	23.9	23.8	23.3	23.0	21.9	20.9	20.1	18.7
90.0	9.40	9.00	8.80	9.00	9.00	9.20	9.20	9.20	9.30	9.09	9.20	9.30	9.30	9.60	9.00

Test System:HOPOO HPG1900  
Temperature:25.3DEG  
Operators:  
Test Date:2022年05月27日

Test Set: HIGH A-Alpha (TYPE A)  
Humidity:65.0%  
Test Distance:10.000 m  
Remarks:



## HONGPU GONIOPHOTOMETERS SYSTEM TEST REPORT

## LUMINOUS DISTRIBUTION INTENSITY DATA

Report number:

MANUFACTURER:	Address:	
NAME: 500410	TYPE:	WEIGHT:
SPECIFICATION:	DIMENSION:	SERIAL No.:

UNIT: cd

C (DEG) γ (DEG)	225	230	235	240	245	250	255	260	265	270	275	280	285	290	295
0.0	196	196	196	196	196	196	196	196	196	196	196	196	196	196	196
5.0	196	196	196	197	197	197	197	197	197	198	197	197	197	196	196
10.0	195	195	194	194	194	193	193	193	193	194	193	193	193	193	193
15.0	190	190	190	190	190	190	190	190	190	190	189	189	188	189	189
20.0	187	187	187	187	186	185	185	185	185	185	184	183	182	182	181
25.0	183	182	180	178	176	175	176	178	179	181	179	178	176	175	175
30.0	174	172	170	171	171	171	171	171	171	171	170	169	169	169	168
35.0	157	159	162	164	159	158	160	157	157	159	155	152	152	151	150
40.0	140	139	138	139	137	133	131	131	132	135	132	131	130	130	131
45.0	125	121	120	121	119	116	115	116	116	119	115	113	114	116	115
50.0	112	110	106	105	102	98.1	96.8	96.0	98.0	102	99.1	97.1	98.2	99.6	101
55.0	98.8	94.4	95.8	92.0	89.2	87.2	89.7	86.7	84.8	87.0	85.7	85.2	84.9	83.9	82.8
60.0	82.4	80.6	77.9	81.0	78.3	75.4	74.4	71.3	65.2	68.5	60.5	62.2	62.7	60.7	64.2
65.0	63.0	60.8	58.6	57.4	56.8	54.0	49.7	51.7	45.9	42.5	37.6	42.9	39.7	43.3	43.7
70.0	47.0	43.7	41.2	38.8	35.7	35.7	33.6	31.8	30.0	30.0	23.0	25.8	27.7	28.3	26.5
75.0	36.1	33.5	30.0	26.5	23.2	21.1	21.3	19.2	19.8	20.2	17.4	16.1	16.5	16.1	16.2
80.0	26.6	24.6	22.5	19.9	17.0	14.9	13.2	12.9	12.4	13.5	12.1	11.9	11.3	11.0	12.0
85.0	17.8	16.7	15.8	14.5	13.0	11.6	10.9	11.0	10.7	11.5	10.3	10.0	9.12	8.66	8.96
90.0	9.20	9.40	9.80	10.0	9.70	9.30	9.00	8.20	7.40	7.00	5.90	6.30	6.20	6.20	6.40

Test System:HOPOO HPG1900  
Temperature:25.3DEG  
Operators:  
Test Date:2022年05月27日

Test Set: HIGH A-Alpha (TYPE A)  
Humidity:65.0%  
Test Distance:10.000 m  
Remarks:

# HONGPU GONIOPHOTOMETERS SYSTEM TEST REPORT

## LUMINOUS DISTRIBUTION INTENSITY DATA

Report number:

MANUFACTURER:	Address:	
NAME: 500410	TYPE:	WEIGHT:
SPECIFICATION:	DIMENSION:	SERIAL No.:

UNIT: cd

C (DEG) γ (DEG)	300	305	310	315	320	325	330	335	340	345	350	355
0.0	196	196	196	196	196	196	196	196	196	196	196	196
5.0	196	196	195	195	195	195	195	195	195	195	195	195
10.0	193	193	192	192	192	191	192	192	193	194	194	194
15.0	189	189	190	189	189	188	187	187	187	187	188	189
20.0	182	182	183	183	183	182	182	183	183	182	182	183
25.0	175	175	175	177	178	177	175	174	175	175	175	175
30.0	167	167	167	164	164	164	165	164	165	167	168	167
35.0	153	154	151	146	145	147	149	150	149	148	149	149
40.0	131	130	129	129	128	129	131	130	131	130	128	131
45.0	114	114	114	114	115	113	116	114	115	115	114	116
50.0	99.3	99.2	100	101	101	102	101	101	102	99.8	100	101
55.0	87.0	93.0	86.5	88.9	89.1	88.6	85.3	85.8	85.8	86.2	88.0	89.0
60.0	67.0	67.6	68.3	70.8	73.0	69.1	68.2	66.0	69.4	72.7	74.9	76.5
65.0	42.5	41.8	45.8	46.7	49.6	49.7	53.7	52.4	54.9	59.1	63.4	64.9
70.0	26.5	27.4	28.3	30.6	36.2	40.1	43.7	43.3	43.0	47.3	51.9	53.3
75.0	16.7	19.1	22.0	23.9	27.3	30.9	33.4	34.0	33.0	37.2	40.6	41.8
80.0	12.6	14.1	16.0	17.7	19.3	22.3	23.8	24.4	23.8	26.9	29.2	30.3
85.0	9.47	10.0	10.8	11.5	12.3	14.0	14.7	15.0	14.8	16.6	18.0	18.8
90.0	6.60	6.40	6.10	5.80	5.80	5.90	5.90	5.80	6.00	6.30	6.80	7.40

Test System:HOPOO HPG1900  
Temperature:25.3DEG  
Operators:  
Test Date:2022年05月27日

Test Set: HIGH A-Alpha (TYPE A)  
Humidity:65.0%  
Test Distance:10.000 m  
Remarks: